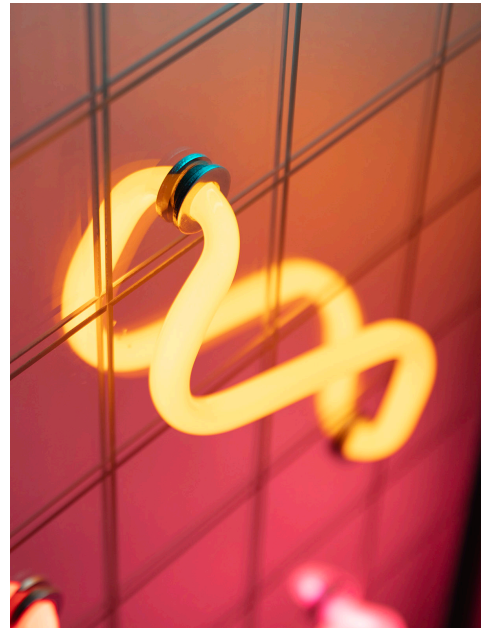
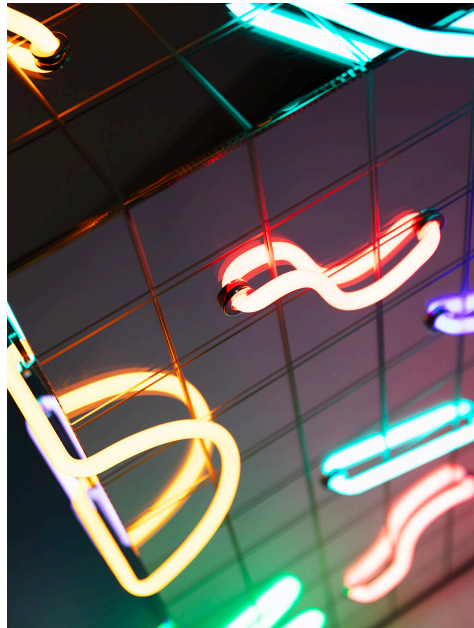


VETRALIA

/ functional art based in Venice /

Caos



Designer

Elisa Facchinetti

Typology

Consolle

Production year

2023

Production run

1

Dimensions

W. 158 cm - H. 93 cm - D. 35 cm

W. 62 ¼ in - H. 36 ⅝ in - D. 13 ¾ in

Materials

Engraved mirror, neon lights, wooden structure

Price

Price under request

Abstract

Caos is a glistening ode to the vibrancy of the 1990s, an explosion of visual energy that captures the feeling of freedom and transformation of that era. The dynamic, soft neon elements on the static mirror surface work together to create a play on reflections. The mirror base, decorated with geometric precision, blends in a fascinating exchange with the luminous elements that pass through it from all angles. The reflective structure and neon glow are the bold experimentation and creative energy of the piece. Caos itself becomes the ingredient of a creation. Caos is a sensory experience that carries the viewer into a vivid journey, reflected in colour.

The work is exclusive to Rossana Orlandi Gallery.

www.vetraliacollectible.com